



The Perfect Gate Hardware Solution For Every Dumpster Enclosure

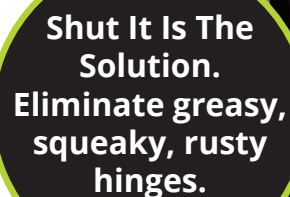
Horizontally Adjustable
Sealed Bearings – No Greasing
Tested To Over 1 Million Open/Close Cycles



Why Shut It Hinges Are Better

- No greasing or maintenance required on sealed bearings. EVER!
- Horizontally adjustable for perfect installations
- Durable – Tested to over 1 Million open/close cycles
- High-temp sealed bearings – safe to powder coat
- Highest gate weight ratings in the industry
- Hinges available in steel, aluminum, weld-on and bolt-on
- For all metal gate applications

Idea for hospitality, apartment complexes, educational and commercial applications. Suitable for heavy, high-traffic gates.



**Shut It Is The
Solution.
Eliminate greasy,
squeaky, rusty
hinges.**

www.ddtech.com

17531 Metzler Lane, Huntington Beach, CA 92647
T: (800) 716-0888 | F: (800) 464-6400 | E: info@ddtechusa.com

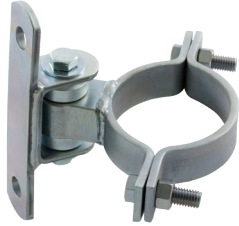


 **D&D Technologies®**
World's most trusted gate hardware

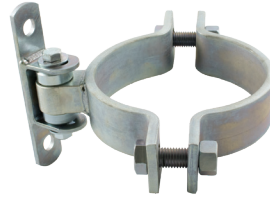
Several Shut It Solutions To Choose From

Shut It Bolt-On

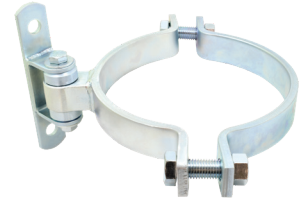
Max Gate Weight:
1,000 lb



CI2051 4" (102mm)
Round Bolt-on BadAss



CI2053 6" (152mm)
Round Bolt-on BadAss



CI2054 8" (203mm)
Round Bolt-on BadAss

Max Gate Weight:
1,000 lb



CI3700 Bolt-on
BadAss



CI3770 Half Bolt-on
BadAss

Max Gate Weight:
1,100 lb



CI3720 Face Mount Bolt-on
BadAss

Max Gate Weight:
300 lb



CI3750 Baby Bolt-on
BadAss

Max Gate Weight:
600 lb



CI3740 Aluminum
Half Bolt-on / Weld-on BadAss



CI3740A Aluminum
Half Bolt-on / Weld-on BadAss



CI3760A Aluminum
Half Bolt-on / Weld-on BadAss

Shut It Weld-On

Max Gate Weight:
1,100 lb

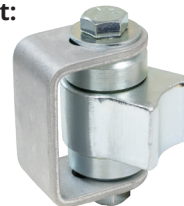


CI3000 Original
BadAss



CI3100 Original BadAss
Rusted

Max Gate Weight:
600 lb

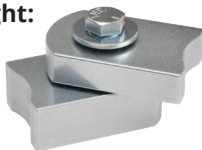


CI3200 Alum/Steel
CI3300 Steel/Alum
BadAss Combo



CI3400 Aluminum
BadAss

Max Gate Weight:
300 lb



CI3600 Baby
BadAss



CI3620 Baby BadAss
Rust



CI3650 Baby BadAss
Aluminum



CI3670 Baby BadAss
Steel/Alum Combo



Scan the QR code for more information or
visit us.ddtech.com

