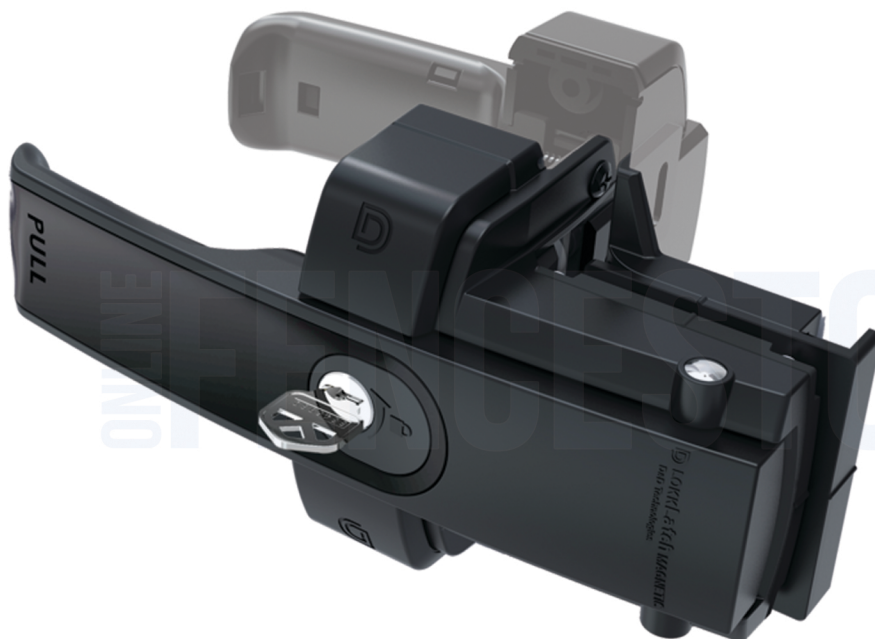


### Magnetic, Push/Pull Gate Lock

- Operates and locks from both sides of the gate
- D&D-patented magnetic latching
- Keyed-alike or keyed different
- Can be rekeyed (by locksmith) to match other door locks
- Vertical & horizontal adjustment
- No visible fasteners (Black trim covers)



Available With Brushed Trim

LokkLatch® MAGNETIC is a versatile, magnetically triggered gate lock/latch that's ideal for driveway and other pedestrian access gates around homes and industrial areas. It's ergonomic, handled design offers a unique and convenient style of gate entry/exit. The latch operates and locks from both sides of the gate! It eliminates the need for padlocks, chains or handle-holes in gates. The LokkLatch® MAGNETIC is made of super-strong, rust-free polymers and stainless steel components, so it's tough and durable. The two-part design provides an 'External Access Lever' that allows street-side entry. Conveniently, the two security lock cylinders can be rekeyed to match other household doors and accesses. (See your locksmith prior to lock installation.) The LokkLatch® MAGNETIC comes supplied standard with gloss-black trim covers (to hide all fasteners).

ICC POOL CODE



APPROVED GATE HARDWARE

Check Your Local Codes Before Purchasing

### Available Colors



Black Or  
Black With Brushed Trim

### Specifications

**Gate Frame/Post Shape:** Square-to-Square

**Min Post Size:** 1-1/2" + (38mm+)

**Ideal Gate Gap:** 3/4" (19mm)

**Fixing Method:** Screw-On

**Lock Type:** Rekeyable (to match door locks)