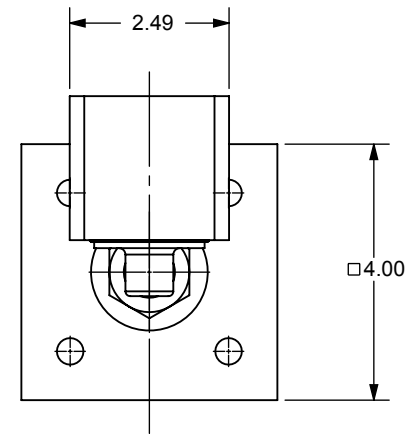
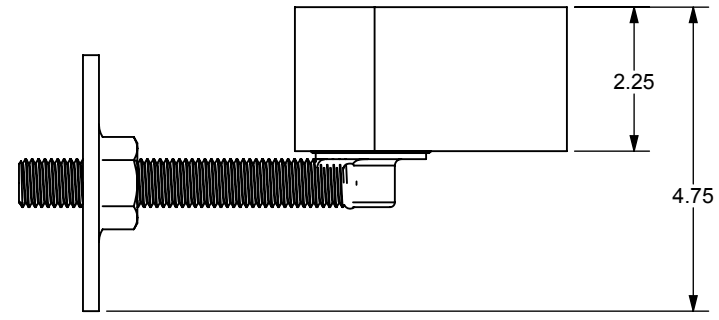
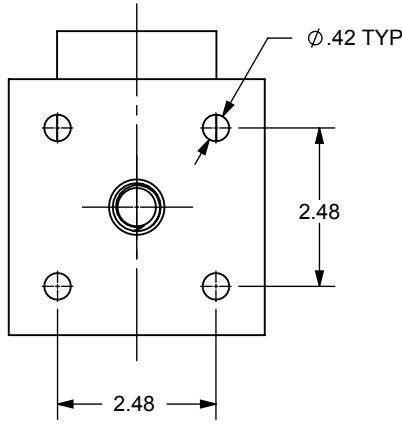
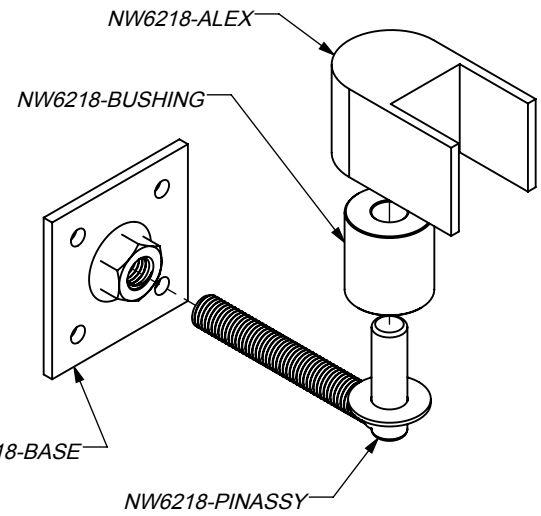
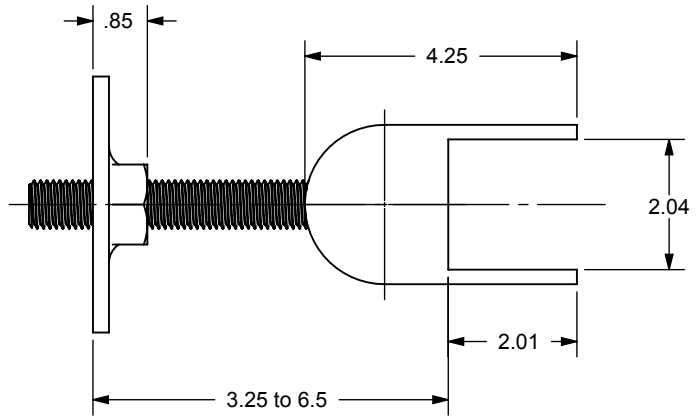
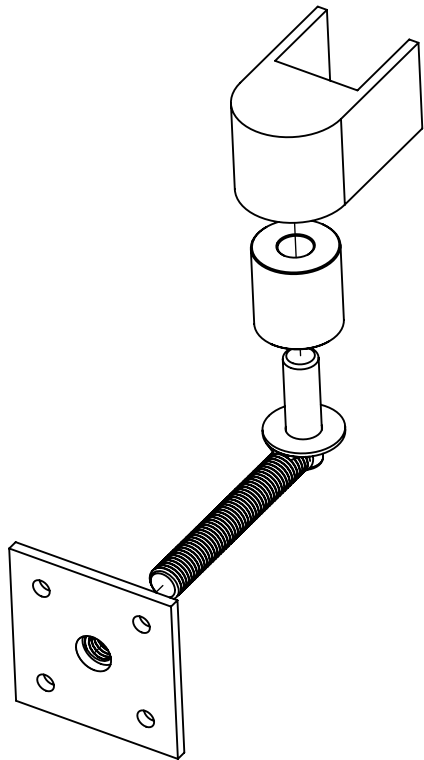


ECR/DCR		REV.	REVISIONS	DESCRIPTION	DATE	APPD
-	-	-	INITIAL RELEASE		4/3/15	-
-	-	1	ADDED PART NUMBERS FOR COMPONENTS		12/9/15	-



- NOTES:
- PART TO HAVE A NON-ABRASIVE FINISH.
 - PART TO HAVE MIN. DRAFT ANGLE AS TOOLING REQUIRES.
 - ANY AND ALL CHANGES TO MATERIAL OR FINISH MUST BE APPROVED BY NWI.
 - ALL DIAMETERS TO BE CONCENTRIC WITHIN .005 UNLESS OTHERWISE SPECIFIED.
 - ALL CORNERS TO BE .015 MAX R OR CHAMFER OR OTHERWISE NOTED.
 - ALL DIMENSIONS ARE FINISHED PART DIMENSIONS.
 - POWDERCOAT FINISH TO BE INTERPON 600 OR NWI APPROVED EQUIVALENT.
 - NO FLASH ALLOWED.
 - REMOVE ALL BURRS, BREAK CORNERS, AND SHARP EDGES.

PROPRIETARY AND CONFIDENTIAL
 THE INFORMATION CONTAINED IN THIS DRAWING IS THE SOLE PROPERTY OF NATIONWIDE INDUSTRIES. ANY REPRODUCTION IN PART OR AS A WHOLE WITHOUT THE WRITTEN PERMISSION OF NATIONWIDE INDUSTRIES IS PROHIBITED.

DIMENSIONS ARE IN INCHES TOLERANCES: FRACTIONAL: ±1/16" ANGULAR: MACH ±1° BEND ±1° TWO PLACE DECIMAL ±0.01 THREE PLACE DECIMAL ±0.005	
MATERIAL STL, SS AND ALUM	
FINISH Z/P AND MILL	
DO NOT SCALE DRAWING	

NAME	DATE
EET	4/3/15
CHECKED	
ENG APPR.	
MFG APPR.	
Q.A.	
COMMENTS: P/L: 11-101 REF: QD- 0399	

NATIONWIDE INDUSTRIES

HD ORNAMENTAL HINGE ASSEMBLY

SIZE A	DWG. NO. CS--NW6218	REV. 1
SCALE: 1:3	WEIGHT:	SHEET 1 OF 1